

Good design is founded on a total understanding of function

Coil are pleased to introduce AT8 LED Illuminated Magnifier to our family of products.

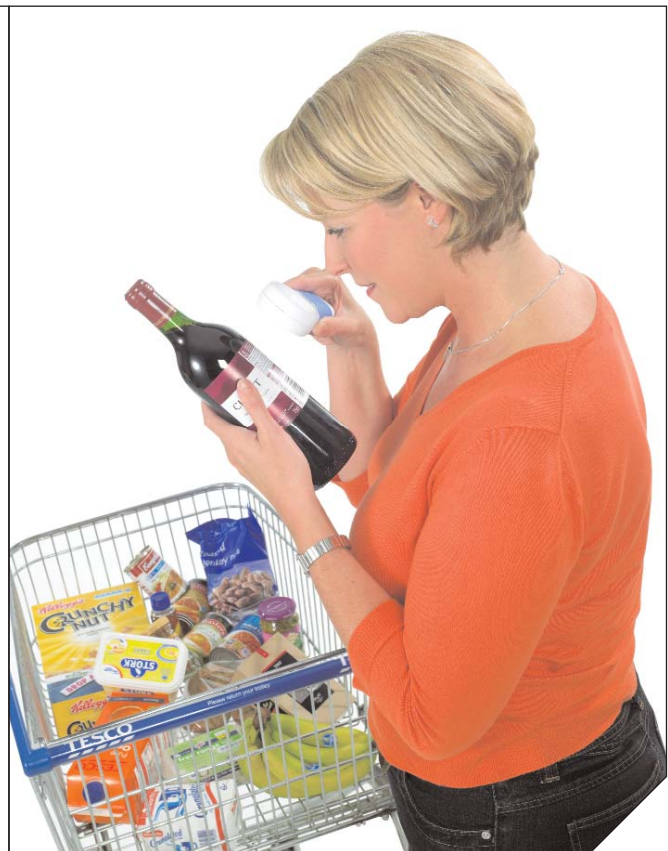
Using our World renowned Bi-Aspheric lens, the AT8 has been designed to combine new innovative technology and specific ergonomic considerations to provide a product that better meets the modern needs of the visually impaired.

AT8 is not only simple to use, easy to carry and convenient to store, it is modern in its design and is truly an aid to the user for both indoor/outdoor use.

The AT8 is simply activated by picking up and holding in either hand and will automatically turn off when released; no more difficult switch operation.

Our LED light source offers better illumination and longer lasting, more efficient light.

The AT8 is powered by environmentally friendly sealed rechargeable batteries, eliminating the need for constant battery change. It is supplied with a recharger and a black protective case that offers additional protection.



A new generation of magnifiers

- **No More Battery Changes**
- **No More Difficult Switches**

3x

5x

7x

9x

11x



AT8



www.coil.co.uk

PROFESSIONAL AT8 ILLUMINATED MAGNIFIER

Features

Benefits

- | | |
|--|--|
| • Touch control | • Ease of use, even for patients with poor grip or low articulation and eliminates battery waste |
| • Ergonomic shape | • Easy hold handles conform naturally to the hand for comfortable hold |
| • Powered by high capacity nickel metal hydride rechargeable batteries | • Full charge typically gives 16 hours of use |
| • No battery purchase | • Considerably reduced running costs |
| • Environmentally friendly | • Eliminates repeated battery disposal |
| • Five lens power variations | • A comprehensive range offering great choice and flexibility |
| • Bi-aspheric lenses | • Designed to be free of significant distortion |
| • Supplied with Mains Charger | • Charger has EU, UK or USA plug |
| • Maintenance free, sealed LED light source | • Tamper resistance offers operation longevity |
| • LED's have 150 times longer life expectancy than conventional bulbs | • More cost effective |
| • LED Luxe performance is 800/900 | • Optimum Illumination |
| • LED's are shock resistant | • Increased protection against accidental damage |
| • Unique sealed outer diffuser lens assembly design | • Offers a broad, even spread of light |
| • LED's do not generate heat | • Improved safety |
| • Supplied with black protective metal case | • Daily protection for long lasting use |
| • Colour all white body and heads | • Improves magnifier illumination performance by up to 10% |
| • Attractive, bright, robust packaging | • For easy identification and storage |

Touch control technology uses a sensitive conductive technique, operating safely without the need for pressure. COIL lenses are optically optimised using the latest computer software and manufactured using the highest quality optical acrylic material.

Your AT8 fully conforms to: BS EN ISO 15253: 2000, CE, EMC and UL standards

AT8 Illuminated Magnifier

Europe	North America	U.K.	Description**	Magnification (1+F/4)*	Equivalent Power F (D)	Lens Diameter (mm)	Image Vergence	Effective Focal Length (mm)	Field of View on Page (mm)
8270/01	8270/03	8270	CM+C	3.0x	8.0	48.0	-4.0D	25.45	80.0
8146/01	8146/03	8146	CM+C	5.0x	16.0	48.0	-4.0D	32.95	50.0
8147/01	8147/03	8147	CM+C	7.0x	24.0	48.0	-4.0D	41.95	35.0
8148/01	8148/03	8148	CM+C	9.0x	32.0	48.0	-4.0D	31.46	24.0
8271/01	8271/03	8271	CM+C	11.0x	40.0	40.0	-4.0D	25.08	20.0
8100/01	8100/03	8100	C Only						

* Magnifier conforms to BS EN ISO 15253: 2000 except that trade magnification is quoted instead of nominal magnification and is calculated using $(1 + \text{Equivalent Power}/4)$

** CM = Complete Magnifier, C = Charger.



www.coil.co.uk

UK Address:

Coil UK (Wipac Ltd)
London Road, Buckingham
MK18 1BH
United Kingdom

Tel: +44 (0)1280 825942

Fax: +44 (0)1280 822802

US Address:

Coil USA (CTP Inc)
600, Depot Street
Latrobe PA 15650
USA

Office No: 724-539-6991

Fax No: 724-537-2534